

PCR & Real-Time PCR

Real-Time PCR kits

- 2x Hotaq Real-Time PCR Master Mix
- 2x HotSybr Real-Time PCR Kit
- One-Step Real-Time RT-PCR Kit

PCR Reagents

- Mix of 4 dNTP's
- HoTaq DNA Polymerase (hot-start)
- Taq DNA Polymerase (regular)

PCR kits

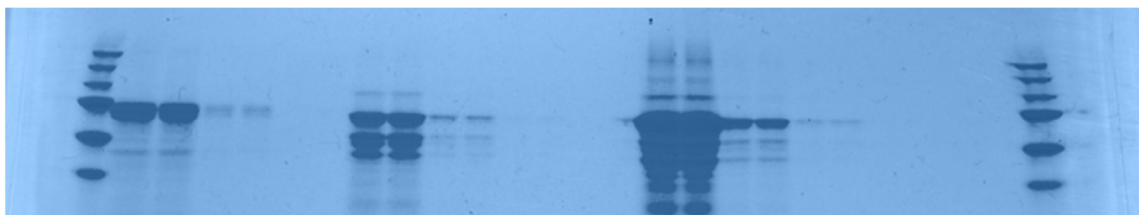
- I-5™ 2X High-Fidelity Master Mix
- 2x HotStart PCR Master Mix
- 2x BlueStar™ PCR HotStart Master Mix

PCR Purification

- D-pure DyeTerminator Clean-up
- Ex's-Pure™ enzymatic PCR cleanup kit
- AmpliClean™ Magnetic Bead-based PCR Cleanup

Sample Preparation

- GenePurgeDirect™ Sample Preparation Reagent



Purification

PCR Purification

- D-pure DyeTerminator Clean-up
- Ex's-Pure™ enzymatic PCR cleanup kit
- AmpliClean™ Magnetic Bead-based PCR Cleanup

Protein purification

- Ni-NTA Agarose

Sample Preparation

- GenePurgeDirect™ Sample Preparation Reagent



Sequencing & Fragment analysis

Capillary Electrophoresis

- BrightDye® Terminator 5X Sequencing Buffer
- Running Buffers
- Bigdye® Terminator 5X Sequencing Buffer
- D-pure DyeTerminator Clean-up
- BDx64 Sequencing Enhancement Buffer
- CARE solution
- Super-DI Formamide
- DNA Size Standards
- Hairpin DNA Sequencing Premix
- Genotyping Reference Human Genomic DNA
- BrilliantDye™ Terminator Cycle Sequencing Kit
- BrightDye® Terminator Cycle Sequencing Kit
- NanoPOP™ Polymers
- AMBeR Sequencing Primers

DNA Sequencer Accessories

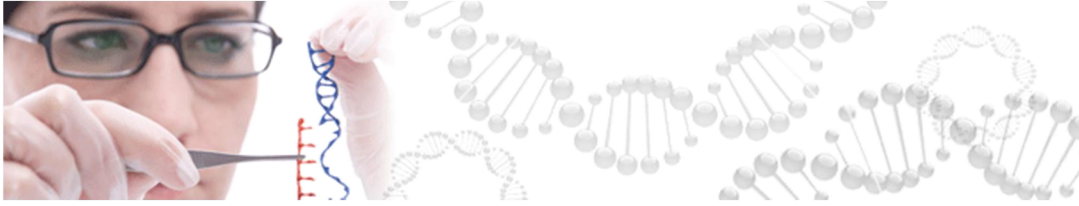
- 310 Capillaries
- 96-well PCR plate with 8-strip Caps

Next-Generation Sequencing

- Atenium™ Ambient DNA Library construction kit
- AmpliClean™ Magnetic Bead-based PCR Cleanup

Primer Sets

- Exo-Resistant Random Primer
- Primers for Sequencing



Molecular Cloning

Molecular Weight Markers

- 10 bp DNA Ladders
- 100 bp DNA Ladder
- 1 Kb DNA Ladder

Competent E.coli

- Dh5-Alpha Competent E. coli
- BL21 Competent E. coli
- BL21(DE3) Competent E. coli
- BL21(DE3)pLysS Competent E.coli
- Dh10-Beta Competent E. coli
- HB101 Competent E. coli
- JM109 Competent E. coli



Diagnostic & Screening kits

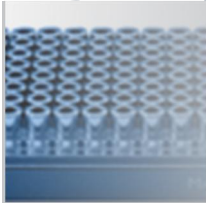
Sequencing & fragment analysis

- fHPV Typing™ Kit
- Aneufast QF-PCR Aneuploidy Diagnostic Testing Kit
- EasySeq PCR plates for BRCA1 and BRCA2 screening

Real-Time PCR

- GenVinSet HLA B27 Detection Kit
- Meat contamination detection kits

Magnetic plates & Accessories



- Rapid bead capture and complete removal of all contaminants
- Strong NdFeB magnets for viscous solutions and large volumes
- Optimized for manual pipetting or robotic access
- Intergrated Spring Cushion Technology

Products in Magnetic plates & Accessories

- MultiMag 12-well microtube Magnet StandFor manual magnetic-bead cleanup using a single- or multichannel pipette Compatible with 12 tube PCR strips Ideal for manual cleanup Extra strong neodymium mag...
 - MAGNUM FLX™ Enhanced Universal Magnet PlateUnmatched separation speeds 50 µl – 2 mL Reaction Volumes Elute in As Little As 10 µl Up to 4.5x Faster Separation Times Universal Plate & Robot Compatibil...
 - Magnum-EX™ Universal Magnet Plate - AlpaquaImproved version of the successful 96M Magnum Plate Fast, Reliable Separation Universal Plate Robotic Compatibility
 - 96R Ring Magnet Plate - AlpaquaThe 96R Ring Magnetic Plate contains 96 ring-shaped NdFeB magnets and intergrated spring cushion technology. This magnet plate is ideal for round-bottom micropl...
 - 96S Super Magnet Plate - AlpaquaThe 96S Super magnet plate with integrated spring cushion technology contains 96 ring-shaped NdFeB magnets. These magnets are stronger than the ones in the 96R ...
 - 96M Magnum™ Plate - AlpaquaFast, Reliable Separation Ring-shaped magnets for optimal efficiency Universal plate
-